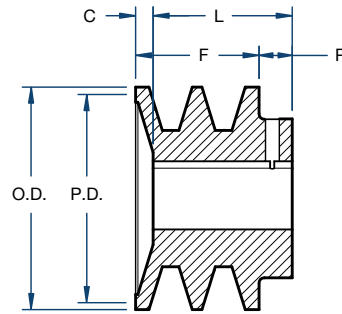
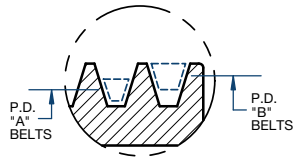


Sheaves

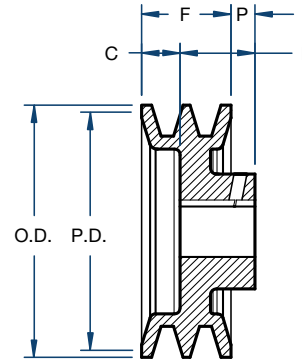
2BK STYLE



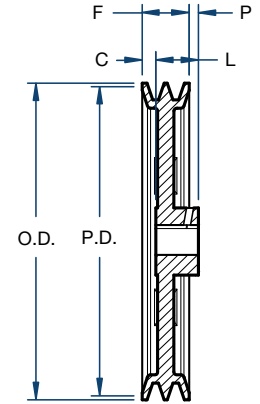
BLACKSTAR®



Type 1



Type 2



Type 3

Part No.	Diameter (in)			Type	Stock Bores Marked (x) (in)									Dimensions (in)				Approx. Weight (lbs)
	Outside	Pitch 4L/A	Pitch 5L/B		1/2	5/8	3/4	7/8	1	1-1/8	1-3/16	1-3/8	1-7/16	F	L	P	C	
2BK25	2.50	1.90	2.30	1	x	x	x	x	—	—	—	—	—	1-3/4	1-31/32	15/32	1/4	1.3
2BK27	2.70	2.10	2.50	1	x	x	x	x	x	—	—	—	—	1-3/4	1-31/32	15/32	1/4	1.6
2BK28	2.95	2.20	2.60	1	x	x	x	x	x	x	—	—	—	1-3/4	1-31/32	15/32	1/4	1.9
2BK30	3.15	2.40	2.80	1	x	x	x	x	x	x	—	—	—	1-3/4	1-31/32	15/32	1/4	2.3
2BK32	3.35	2.60	3.00	1	—	x	—	x	x	x	—	—	—	1-3/4	1-31/32	15/32	1/4	2.6
2BK34	3.55	2.80	3.20	1	—	x	x	x	x	x	—	—	—	1-3/4	1-31/32	15/32	1/4	2.8
2BK36	3.75	3.00	3.40	1	—	—	x	x	x	x	—	x	—	1-3/4	1-31/32	15/32	1/4	3.3
2BK40	3.95	3.20	3.60	2	—	x	x	x	x	x	—	—	—	1-3/4	1-15/32	15/32	3/4	3.3
2BK45	4.25	3.50	3.90	2	—	—	—	—	x	x	—	x	—	1-3/4	1-15/32	15/32	3/4	3.3
2BK47	4.45	3.70	4.10	2	—	—	—	x	x	x	—	—	—	1-3/4	1-15/32	15/32	3/4	3.7
2BK50	4.75	4.00	4.40	2	—	—	x	—	x	x	—	x	—	1-3/4	1-15/32	15/32	3/4	4.1
2BK52	4.95	4.20	4.60	2	—	—	—	x	x	x	—	x	—	1-3/4	1-15/32	15/32	3/4	4.5
2BK55	5.25	4.50	4.90	2	—	—	—	—	—	x	—	x	—	1-3/4	1-15/32	15/32	3/4	4.5
2BK57	5.45	4.70	5.10	2	—	—	—	—	x	x	—	x	—	1-3/4	1-15/32	15/32	3/4	5.1
2BK60	5.75	5.00	5.40	3	—	—	x	x	x	x	—	x	—	1-3/4	1-15/32	15/32	3/4	4.9
2BK62	5.95	5.20	5.60	3	—	—	—	—	x	x	—	x	—	1-3/4	1-15/32	15/32	3/4	4.8
2BK65	6.25	5.50	5.90	3	—	—	—	—	x	x	—	x	—	1-3/4	1-15/32	15/32	3/4	5.0
2BK67	6.45	5.70	6.10	3	—	—	—	—	x	x	—	x	—	1-3/4	1-15/32	15/32	3/4	5.0
2BK70	6.75	6.00	6.40	3	—	—	x	—	x	x	x	x	x	1-3/4	1-19/32	11/32	1/2	6.6
2BK80	7.75	7.00	7.40	3	—	—	x	—	x	x	x	x	x	1-3/4	1-19/32	11/32	1/2	7.2
2BK90	8.75	8.00	8.40	3	—	—	x	—	x	x	x	x	x	1-3/4	1-19/32	11/32	1/2	8.4
2BK100	9.75	9.00	9.40	3	—	—	x	—	x	—	x	x	x	1-3/4	1-19/32	11/32	1/2	9.4
2BK110	10.75	10.00	10.40	3	—	—	—	—	x	—	x	—	x	1-3/4	1-19/32	11/32	1/2	10.4
2BK120	11.75	11.00	11.40	3	—	—	—	—	x	—	x	—	x	1-3/4	1-19/32	11/32	1/2	11.8
2BK130	12.75	12.00	12.40	3	—	—	—	—	x	—	x	—	x	1-3/4	1-19/32	11/32	1/2	14.9
2BK140	13.75	13.00	13.40	3	—	—	—	—	x	—	x	—	x	1-3/4	1-19/32	11/32	1/2	16.3
2BK160	15.75	15.00	15.40	3	—	—	—	—	x	—	x	—	x	1-3/4	1-19/32	11/32	1/2	18.0
2BK190	18.75	18.00	18.40	3	—	—	—	—	—	—	x	—	x	1-3/4	1-19/32	11/32	1/2	23.3